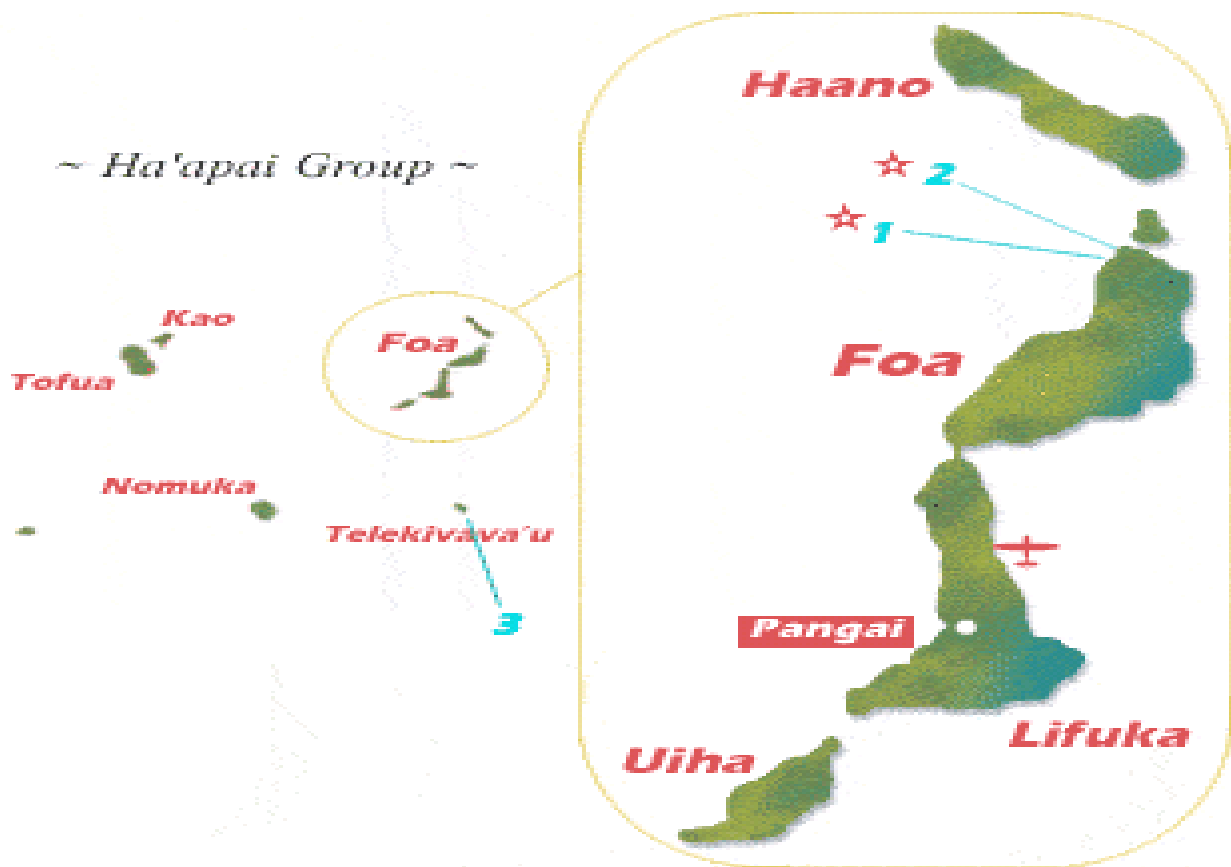




Kingdom of Tonga

# HA'APAI DEVELOPMENT MASTER PLAN

2011/2012 – 2020/2021



HA'APAI DEVELOPMENT COMMITTEE

SEPTEMBER 2010

# PART I

## HA'APAI DEVELOPMENT MASTER PLAN

**Contact Information:**

Email: [lfaletau@finance.gov.to](mailto:lfaletau@finance.gov.to)

Phone: (00676) 28 120 / 23 066

1<sup>st</sup> floor TDB Building

Policy & Planning Division

Ministry of Finance & National Planning

## TABLE OF CONTENTS

1. Introduction	3
2. Key Result Areas	4
3. Strategies	4
4. Specific Objectives	4
5. Implementation Phases	5
6. Organisational Set up	6
7. Implementation Matrix	7
Appendix 1: Implementation Schedule	15
Appendix 2: Selected MDGs to be achieved in The HDMP	19
Appendix 3: List of Investment Needs	21
Appendix 4: Details of Investment Needs listed in Appendix 3	23

## 1. Introduction

This Ha'apai Development Master Development covers ten years – 2010 to 2020. It is a result of direction from the Ha'apai Development Committee *“To provide a Master Development Plan to prioritize projects that can further enhance the development of the Ha'apai Group to improve the living standard of its people and contributes to the economic growth of the Kingdom”*

The tasks involved in this project included desk review of existing reports on consultation conducted by other stakeholders (GOT, AusAID & MORDI), consultations with the relevant government ministries, NGOs, relevant private sector and wide consultations with all the six districts of Ha'apai.

This Plan takes a strategic approach to ensure a sustainable socio economic development for the Ha'apai Region. It is in line with the government's vision for Tonga.

***“To create a society in which all Tongans enjoy higher living standards and a better quality of life through good governance, equitable and environmentally sustainable private sector-led economic growth, improved education and health standards, and cultural development”.***

This plan also takes into account four of the seven major outcome objectives set out in the NSPF.

- 1. Facilitate Community Development by involving district/village communities in meeting their service needs;**
- 2. Maintain and develop infrastructure to improve the everyday lives of the people**
- 3. Increase performance of Technical Training Vocational Education & Training to meet the challenges of maintaining and developing services and infrastructure**
- 4. Integrate environmental sustainability and climate change into all planning and executing of programs**

## **2. Key Result Areas**

1. Availability of fund to finance the projects within the time period
2. Ha'apai People's satisfaction with project implementation
3. Meet MDGs 1,2,3,4,7 & 8
4. Active Community Participation
5. Active government involvement in the implementation of the plan

## **3. Strategies**

1. Partnership and coordination between government, community and donor agencies
2. Institutional and Capacity Building
3. Market demand driven economic activities based on available local resources
4. Continuous Monitoring & Evaluation

## **4. Specific Objectives**

1. Government to secure funds from donors agencies for the plan implementation for next ten years by 2011/12;
2. To achieve more than 80% satisfaction rate of the Ha'apai community with the implementation of the investment projects proposed in this plan or later reviews by 2020/21;
3. Achieve MDGs 1,2,3,4,7 & 8 (refer Appendix 2)
4. Setting up of the Ha'apai Management Council, village and district councils for all of the Ha'apai Region by the end of 2011;

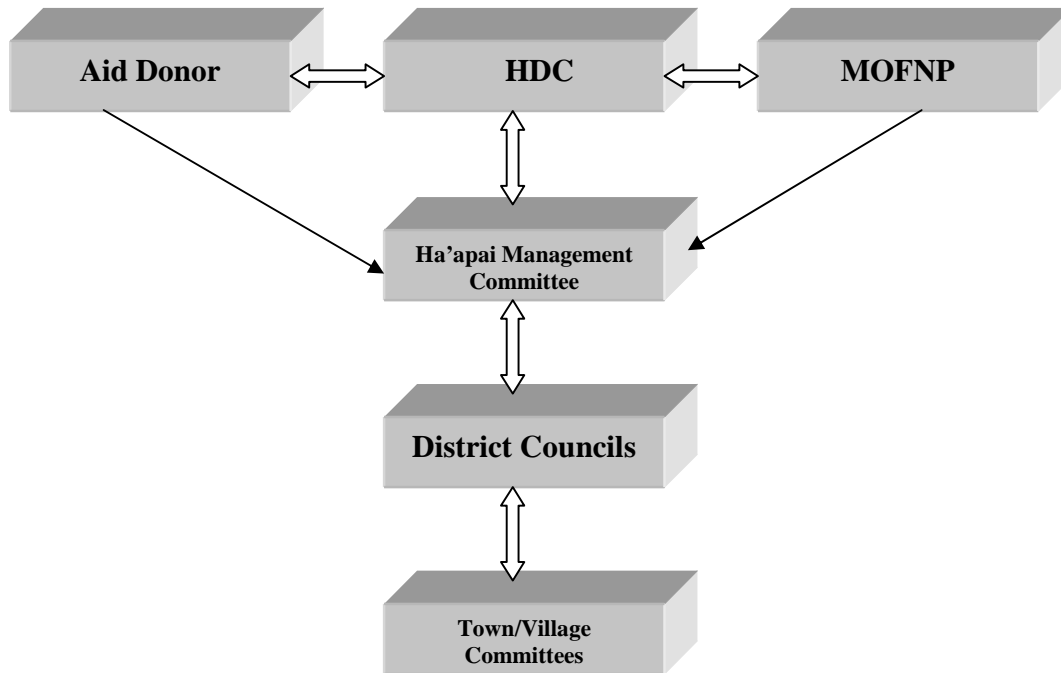
5. Improved community participation through 50% reduction of dependency on foreign aid and government to provide infrastructure for basic facilities such as village water supply and village fence by 2020/21;
6. Establish and implement of an annual monitoring and three year review of the plan.

## 5. Implementation Phases

This ten year Master Development Plan for Ha'apai is proposed to be implemented in three major phases as follows:

<b>PHASE</b>	<b>MAIN ACTIVITES</b>
PHASE 1: Year 0 – Year 3 (2010/11 to 2013/14)	Preliminary activities – donor meeting to sell the plan, securing fund from donors (2011/12)
	Feasibility studies for Needs particularly levels 1, 2 & 3
	Institutional Strengthening – Resources for M & E at MOFNP, training & establishment of Ha'apai Management Council, village and district councils
	Plan Implementation particularly of needs level 1,2 & 3
	Annual monitoring and Review of plan implementation in Phase 1
PHASE 2: Year 4 – Year 6 (2014/15 – 2016/17)	Continue with feasibilities studies
	Continued implementation of Needs levels 1,2& 3
	Implementation of Needs levels 4,5,6 & 7
	Annual monitoring and Review plan implementation in Phase 2
PHASE 3: Year 7 – 10 (2017/18 – 2020/21)	Complete unfinished projects and any new projects identified and included from Reviews of Phase 1 & 2.
	Annual monitoring and Final Review and Completion Report

## 6. Organisational Set Up



## 7. Implementation Matrix

Investment Activities	Resources Needed	Responsible Agency	Timeline	Status as of .....
<b>PHASE 1 – 2011/12 to 2013/14</b>				
<b>Key Result Area 1:</b> Availability of Fund to finance the projects within the time period.				
<b>Strategy 1:</b> Partnership and coordination between government, community and donor agencies.				
<b>Specific Objective 1:</b> Government to secure funds from donor agencies for the plan implementation for the next ten years.				
<b>Level 1 Needs (Risk Scores of 90)</b>				
<b>1. Securing of Funds</b>				
i. Donor Meeting and approval for financing the activities	\$10,000 – meeting venue, printing & refreshments	Planning Department of MOFNP, Donor Agencies	2010/11-11/12	
ii. Signing of MOU	Na	Do	2011/12 – 12/13	
<b>Key Result Area 2:</b> Active government involvement in the implementation of the plan				
<b>Strategy 2:</b> Institutional and Capacity Building				
<b>Specific Objectives 2:</b> Setting up of the Ha’apai Management Council, village/district councils; improve planning capacity at MOFNP.				
<b>2. Institutional Strengthening &amp; Capacity Building at Community</b>				
i. Establishment of Ha’apai Management Council, election of council members, roles, registering as legal bodies; - training councilors to understand their roles	\$100,000	Planning Department of MOFNP, NGOs	2011/12	



ii. Monthly meetings of the councils in the first three years		Ha'apai Management Council	On-going from 2011- 2013	
iii. Bi-monthly meeting of the councils in the 4 <sup>th</sup> – 10 <sup>th</sup> year		Do	On-going from	
<b>3. Capacity Building at MOFNP to strengthen HR and resources at Planning Section</b>				
i. Three more professional staff and computers	Internal staff transfer, \$10,000 for computers	MOFNP	2010/11	
ii. Annual monitoring	Na	MOFNP	Annual starting at end of 2010/11	
iii. External Review of the plan after every phase (together with Community Satisfaction Survey)	\$50,000	MOFNP	End of every phase (2013/14, 2016/17 and 2020/21)	
<b>Sub-Total</b>	<b>\$170,000</b>			
<b>Key Result Area 3: Meet MDGs 1,2,3,4,7 &amp; 8</b>				
<b>Strategies 3: Partnership and coordination between government, community and donor agencies; Continuous monitoring &amp; evaluation; Market driven economic activities based on available resources,</b>				
<b>Specific Objectives 3: Implement all the investment projects proposed in this plan by or later reviews 2020/21; Achievement of MDGs 1,2,3,4,7 &amp; 8; Construction of foreshore for low lying areas such as Lifuka, affected islands/villages in Lulunga &amp; Foa; Achieve more than 80% satisfaction rate of the Ha'apai community.</b>				
<b>4. Water projects (Refer Appendices 3 and 4 for details)</b>				
i. Feasibility assessment of water projects	This should be done internally by Planning staff of MOFNP	MOFNP	2011/12 – 15/16	
ii. Implementation of water projects	\$500,000	MOFNP, donor agency, community	2012/13 – 2015/16	
<b>5. Education Projects (Refer Appendices 3 and 4 for details)</b>				

i. Improve resources at Ha'apai High School	\$500,000 but MEWAC to provide the cost	MEWAC & MOFNP	2011/12- 2013/14	
<b>6. Road Projects(Refer Appendices 3 and 4 for details)</b>				
i. Feasibility assessment of road projects	\$30,000	MOFNP, Consultant, Aid Agency	2012/13	
ii. Implementation of road projects (refer Annex 1 for details)	\$5,000,000	MOFNP, Implementing Agency, Aid Agency	2013/14 – 18/19	
<b>7. Wharf Projects (Refer Appendices 3 and 4 for details)</b>				
i. Improving of Pangai wharf	Currently under World Bank Aid		Before the end of 2010	
ii. Nomuka Wharf	Currently under AusAID		2010/11	
iii. Feasibility assessment	\$30,000	MOFNP, Consultant Aid Agency	2011/12 – 2012/13	
iv. Implementation	\$200,000	MOFNP, Contractor, Aid Agency	2012/13 – 14/15	
<b>8. Promote Private Sector Development (Refer Appendices 3 and 4 for details)</b>				
i. Assessment of productive sector package to promote eco tourism related activities, light import substitution/export industries, promote decorative handicraft, training & mentoring and consider and other viable project in the productive sector	\$50,000	MOFNP, TCCI, Aid Agency	2011/12 – 2012/13	
ii. Implementation	\$10,000,000	Private Sector, Aid Agency	2012/13-2020/21	
<b>9. Disaster Management (Refer</b>				

<b>Appendices 3 and 4 for details)</b>				
i. Assess location for Red Cross & MOW for safe storage of equipment and stock	To be done by MOW and Red Cross	MOW & Red Cross	2010/11	
ii. Relocation of equipment & stock to new location	\$100,000	Do	2010/11 – 11/12	
<b>10. Renewable Energy Projects (Refer Appendices 3 and 4 for details)</b>				
i. Feasibility assessment	Energy Unit staff can do this	Energy Unit, MLSNR	2011/12 – 2012/13	
ii. Implementation	\$300,000	Energy Unit, MLSNR, Aid Agency	2011/12 – 14/15	
<b>Level 2 Needs (Risk Scores of 81)</b>				
<b>11. Environment Projects Refer (Refer Appendices 3 and 4 for details)</b>				
i. Special project to determine feasibility (Current)	Currently under AusAID	Ministry of Environment, AusAID	2010/11- 2011/12	
ii. Implementation	\$5,000,000	Ministry of Environment, Contractor , Aid Agency	2012/13 – 15/16	
<b>12. Health Projects (Refer (Refer Appendices 3 and 4 for details)</b>				
i. Feasibility study to determine rubbish dump & sewage at Pangai	\$50,000	Ministry of Health, Consultant, Aid Agency	2011/12 – 12/13	
ii. Implementation	\$2,000,000	Ministry of Health, Contractor, Aid Agency	2013/14 - 16/17	
iii. Toilet Septic Upgrade	\$20,000	MEWAC, Ministry of Health, Contractor, Aid Agency	2011/12 – 2012/13	
<b>13. Tourism Projects (Refer (Refer</b>				

<b>Appendices 3 and 4 for details)</b>				
i. Cruise-ship to arrive in Ha'apai - Ensuring depths of sea	Na	MOT & TDS ensuring depth of sea	2012/13 – 13/14	
ii. Assess and focus on eco-tourism tourism related projects – package tour, cruise ship, marine activities, up-grade motels.	See private development package		2012/13	
<b>14. Village and crops protection from pigs (Refer Appendices 3 and 4 for details)</b>				
i. Feasibility assessment	MOFNP & MAFFF staff can do these estimates	MOFNP, Aid Agency, Communities	2011/12 2012/13	(Note, there Acts on pigs to be penned)
ii. Implementation	\$500,000	MOFNP, Aid Agency	2013/14 15/16	
<b>15. Inter-island Ferry (Refer (Refer Appendices 3 and 4 for details)</b>				
i. Feasibility assessment	\$50,000	MOT, Consultants, Aid Agency	2011/12	
ii. Implementation	\$5,000,000	MOT, Contractor, Aid Agency	2012/13 – 14/15	
<b>Level 3 Needs (Risk Scores of 72)</b>				
<b>Education (part of Education projects - (Refer Appendices 3 and 4 for details)</b>				
i. Feasibility assessment – form 7, vocational studies, DVD to help pupils due to shortage of teachers at both primary schools & high school	MEWAC staff can do this	MEWAC, Aid Agency	2011/12	
ii. Implementation	\$100,000 but MEWAC to provide cost if viable	MEWAC, Aid Agency	2013/14	

ii. Implementation				
<b>16. Market Access for Weaving products (Refer Appendices 3 and 4 for details)</b>				
i. Feasibility Study	\$50,000	Properly link to manufacturing Association, women groups & private sector	2011/12	
ii. Training of women to be more innovative with handicraft making	\$100,000		2012/13-13/14	
<b>Health (refer 3.4 in Annex 1)</b>				
i. Feasibility assessment	Ministry of Health Staff can do this	Ministry of Health	2010/11	
ii. Implementation	Ministry of Health to provide cost	Ministry of Health, Aid Agency	2012/13	
<b>17. Annual Monitoring of the Plan</b>	<b>Planning staff at MOFNP can do this</b>	<b>MOFNP</b>	<b>2010/11-2020/21</b>	
<b>18. Community Satisfaction Survey &amp; External Review</b>	<b>MOFNP staff can do this</b>	<b>MOFNP, Consultant, Aid Agency</b>	<b>2013/14, 2016/17, 2020/21</b>	
<b>Sub-total</b>	<b>\$29,580,000</b>			
<b>PHASE 2 (2014/15-2016/17)</b>				
<b>Needs Level 4 (Risk Scores of 63)</b>				
<b>Education (part of Education projects)</b>				
i. More teachers to primary schools at Foa – subject to TESP				
ii. More teachers and DVD for ‘Uiha primary schools – subject to TESP				

<b>19. Miscellaneous Projects (Refer Appendices 3 and 4 for details)</b>				
i. Office WC and septic tank – environment hazard, located at seashore (MOFNP)	\$20,000 local funds, and should be done urgently	MOFNP	2010/11	
<b>Needs Level 5 (Risk Scores of 54)</b>				
<b>Education (part of Education projects)</b>				
i. Establish form 7	Refer No. 15	MEWAC	2013/14-14/15	
ii. More staff quarters (MEWAC OIC)	\$100,000 - MEWAC funds	MEWAC	2013/14 – 14/15	
<b>Finance (part of miscellaneous)</b>				
i. Custom Department building for inspection of yachts (MOFNP OIC)	Na	Revenue Department & MOFNP	2010/11	
<b>20. Sports Projects (Refer Appendices 3 and 4 for details)</b>				
i. Sports equipment & Gym for the Ha'apai community	\$500,000 - MOTEYS funds	MOTEYS	2013/14 – 17/18	
ii. Miscellaneous - Government flat for MLCI OIC	GoT	MLCI	2012/13 – 14/15	
iii. Miscellaneous - Office vehicle for MOT	GoT to transfer 1 van from Nuku'alofa	MOT	2010/11-11/12	
<b>Needs Level 6 (Risk Scores of 48)</b>				
21. 6 HDC members from Ha'apai – part of Institutional Strengthening	Na	MOFNP	2010/11-11/12	
v. Ice-block making machine – part of Inter-island ferry				

<b>Needs Level 7 (Risk Scores of 45)</b>				
22. Police sub-stations for Kauvai and Lulunga Districts – part of Miscellaneous	GoT	Ministry of Police	2013/14 – 16/17	
Assess the need				
<b>Sub-total</b>	<b>\$620,000</b>			
<b>PHASE 3 (2017/18 – 2020/21)</b>				
23. Complete unfinished projects				
<b>GRAND-TOTAL</b>	<b>\$30,370,000</b>			

## APPENDIX 1: Implementation Schedule

	FSC	Year 1	Year 2	Year 3	Year 4	Year 5	Year 6	Year 7	Year 8	Year 9	Year 10
	2010/11	11/12	12/13	13/14	14/15	15/16	16/17	17/18	18/19	19/20	20/21
<b>PHASE 1: 201/12 – 2013/14</b>											
<b>1. Securing of funds</b>											
i. Donor Meeting to secure fund											
ii. Signing of MOU											
<b>2. Institutional Strengthening</b>											
i. Establishment of Ha'apai Committees											
ii. Monthly Meeting											
iii. Bi-monthly meeting											
<b>3. Capacity Building of MOFNP</b>											
i. Additional Staff											
ii. Annual Monitoring of Plan											
iii. External Review of Plan											
<b>4. Water projects</b>											
i. Feasibility Study											
ii. Implementation											
<b>5. Education projects</b>											
i. Improve Resources											
<b>6. Road Projects</b>											
i. Feasibility Study											
ii. Implementation											
<b>7. Wharf Projects</b>											
i. Feasibility Study											
ii. Implementation											
<b>8. Promote Private Sector</b>											



	FSC	Year 1	Year 2	Year 3	Year 4	Year 5	Year 6	Year 7	Year 8	Year 9	Year 10
	2010/11	11/12	12/13	13/14	14/15	15/16	16/17	17/18	18/19	19/20	20/21
i. Assessment											
ii. Implementation											
<b>9. Disaster</b>											
i. Assessment											
ii. Relocation											
<b>10. Renewable energy projects</b>											
i. Special study to determine feasibility & cost											
ii. Implementation											
<b>11. Environment Projects</b>											
i. Special Study											
ii. Implementation											
<b>12. Health Projects</b>											
i. Feasibility Study – rubbish dump & sewage											
ii. Implementation											
iii. Toilet & Septic Upgrade											
<b>13. Tourism Projects</b>											
i. Cruise Ships to arrive in Ha’apai											
ii. Assess and focus on eco-tourism											
<b>14. Village and crop productivity</b>											
i. Assessment											
ii. Implementation											
<b>15. Inter-island Ferry</b>											
i. Feasibility study											
ii. Implementation											
<b>16. Market Access for Weaving Products</b>											

	FSC	Year 1	Year 2	Year 3	Year 4	Year 5	Year 6	Year 7	Year 8	Year 9	Year 10
	2010/11	11/12	12/13	13/14	14/15	15/16	16/17	17/18	18/19	19/20	20/21
i. Market Study and linking to private sector											
ii. Training of women to be creative/innovative											
<b>17. Annual Monitoring of the Plan</b>											
<b>18. Community Satisfaction Survey</b>											
<b>PHASE 2: 2014/15 – 2016/17</b>											
<b>19. Miscellaneous Projects</b>											
i. Office of WC, septic tank of MOFNP											
ii. Establishment of Form 7											
iii. Staff quarters for high school teachers											
iv. Government flat for MLCI											
v. Office vehicle for MOT											
<b>20. Sports Projects</b>											
Sports Equipment & Gym											
6.1.1. 6 HDC Members from Ha'apai (GOT)											
<b>21. 6 HDC members from Ha'apai</b>											
<b>22. Police Sub-station in Kauvai &amp; Lulunga</b>											
<b>PHASE 3: 2017/18 – 2020/21</b>											
<b>23. Completion of unfinished projects</b>											

**APPENDIX 2: SELECTED MDGs TO BE ACHIEVED IN THE HA'APAI MASTER PLAN**

<b>MILLENNIUM DEVELOPMENT GOALS</b>	<b>Status at 2010</b>	<b>Status at 2020/21</b>
<b>MDG 1: Eradicate extreme poverty &amp; hunger</b>		
Target 1: Halve between 1990 – 2015 the proportion of people whose income is less than \$1 a day.		
MDG1:1 Proportion of population below \$1 (PPP) per day	4 (2001) 22 (2004)	...
MDG1:3 Share of the poorest quintile in national consumption	7.7 (2001) 7.4 (2005)	...
<b>MDG 2: Achieve universal primary education</b>		
Target 2. A: Ensure that by 2015, children everywhere, boys and girls alike will be able to complete a full course of primary schooling		
MDG 2.1: Proportion of pupils starting grade 1 who reach the last grade of primary school	93% (2001) 88.9% (2006) 90% (2007)	...
MDG 2.3: Literacy rate of 15-24 year olds	99.4% (2006)	
<b>MDG3: Promote gender equality &amp; empower women</b>		
Target 3.A: Eliminate gender disparity in primary and secondary schools, preferably 2005 and in all levels no later than 2015		
MDG 3.1.: Ratio of girls and boys in primary, secondary and tertiary schools		
Ratio of girls to boys in primary schools	89 (2001) 89 (2006) 88 (2008)	...
Ratio of girls to boys in secondary schools	99 (2001) 94 (2006) 97 (2008)	...
Ratio of girls to boys in tertiary schools	69 (2001) 99 (2008)	...
<b>MDG 4: Reduce Child Mortality</b>		
Target 4. A: Reduce by two-thirds between 1990 and 2015 the under five mortality rate		
MDG 4.1: Under five mortality rate	20 (2001) 16 (2006) 25 (2008)	...
<b>MDG 7: Ensure Environmental sustainability</b>		
Target 7.B: Reduce biodiversity loss, achieving, by 2010, a significant reduction in the rate of loss		
MDG 7.6. Proportion of terrestrial and marine areas protected	1.4 (2008)	...
Target 7.C: Halve by 2015, the proportion of people without access to safe drinking water and basic sanitation		

<b>MILLENNIUM DEVELOPMENT GOALS</b>	<b>Status at 2010</b>	<b>Status at 2020/21</b>
MDG1 7.8 : Proportion of population using an improved drinking water source.		
Total	98 (2006)	...
Urban	98.3 (1996)	...
Rural	98.1(1996)	...
MDG 7.9: Proportion of population using an improved water source sanitation facility.		
Total	82 (2006)	...
Urban	99 (1996)	
Rural	...	
<b>MDG 8: Develop a global partnership for development</b>		
Target 8.A: Develop further and open, rule-based, predictable, nondiscriminatory trading and financial system. Includes a commitment to good governance, development and poverty reduction		
MDG8.4: ODA received in small island developing States as a proportion of their gross national incomes.		
Million USD	21.5 (2006)	
% of GNI	9.62 (2006)	
% of GNP	30 (2010)	
Target 8.C: Address the special needs of the island Developing States		
MDG8.C: Proportion of ODA provided to build trade capacity	1.2 (2010)	
Target 8.F: In cooperation with the private sector, make available the benefits of new technologies, especially information and communication		
MDG8.14: Telephone lines per 100 population	13.3(2008)	
MDG 8.15: Cellular subscribers per 100 population	46.4(2007)	
MDG8.16: Internet user per 100 population	8.4(2007)	

Source: MDGs Report Summary 2010

### APPENDIX 3: LIST OF INVESTMENT NEEDS

- 1 Water related 7 needs, including improve villages water supply to all districts: such as, upgrading, new water tanks, and water pumps – diesel or solar powered (yellow color).
- 2 Education related 12 needs, mainly improve resources: such as, number of high school and primary teachers, establish vocational studies and Form 7, the use of technology (DVD players and discs – MOE record in Nuku’alofa lessons for primary school Classes 1 – 6 and distribute one set to each island school, and staff quarters (light green color)
- 3 Road works in 5 districts (except ‘Uiha), both village and agricultural roads (purple color).
- 4 Wharf related – 1 new and 5 upgrade needs (dark blue color).
- 5 Health related – 9 needs, mainly improve resources including medical equipment, solid and liquid waste disposal, and staff numbers (light blue color).
- 6 Village protection (fencing) from pigs, 5 districts except ‘Uiha (red color).
- 7 Inter-island ferry (steel construction and multi-functional) for Ha’apai only (about 16 – 18 meters length) proposed by 4 districts and strongly supported by 7 Ministries (light shaded color).
- 8 Market access for women’s weaving and men’s fishing catches (dark green color).
- 9 Ice block making machine for fish catches. This need could be met by having one ice making plant in the new passenger ferry from where fishermen obtain their ice requirement when it calls into an island (dark shaded color)
- 10 Tourism related needs, such as: packaged tours for Lifuka, Uoleva, ‘Uiha/Felemea, Lofanga components in 1 -2 days, and establish one 3-star (20 – 30 room) hotel in Lifuka (only 10 motels/small resorts in Ha’apai now) and upgrade motel in Felemea; and cruise ship call in ialnds of Ha’apai at least once a year (no color).
- 11 Environment related – foreshore protection in Lifuka and Ha’afeva (no color).
- 12 Renewable energy – solar power plant to supplement diesel power in case diesel generator is not working, for ‘Uiha and Ha’afeva (no color)
- 13 Sport related, such as, a gym and different sport equipment to Pangai and then other district centers (no color).
- 14 Miscellaneous infrastructure: Police sub-stations to be established in Kauvai and Lulunga districts; Custom’s office for border control activities; new GoT quarters for staff of MLCI and Tourism; and MOT vehicle (1 vehicle suggested be transferred from Head Office to Pangai) (no colors).
- 15 Institutional related: similar but simplified structure as proposed under Figure 2 of this Report (Part II), and more representation from the 6 districts, either in the HDC or a working committee (such as Project Co-ordination Committee) to be based in Pangai as the Ha’apai communities now felt being neglected by GoT (no color).
- 16 The Red Cross and MOW’s Disaster Management Division raised their concerns of no land and dedicated building for the safe storage of their equipment and stores;

17 Promote private sector development package based on local resources in Ha'apai to:

- encourage tourist related services and activities;
- encourage light/cottage, import substitution industries such as soap, Tongan oil, chips, fish smoking - these can be developed over time and improve quality for export;
- promote export of both cultural and decorative handicrafts;
- provide training and mentoring by experts to Ha'apai private sector

**APPENDIX 4: DETAILS OF INVESTMENT NEEDS LISTED IN APPENDIX 3**

Ref	Level of Need/Projects	Estimated Costs - TOP	Period to be Implemented
<i>I</i>	<i>Level 1 Needs (Risk scores of 90)</i>		
1.1	<u>Water Projects</u>	Special project to determine feasibility and costs- FY 2010/11 (FSC)	FY 2011/12 is Year 1
1.1.1	Improve villages' water supply (Pangai)		Year 1
1.1.2	Improve water supply system - replacing old water pumps and replace old pipes (Foa)	Same	Year 1
1.1.3	Extra water tank for Ha'ano & Mutoa, extra water catchment (Ha'ano)	Same	Year 1
1.1.4	Solar powered water pump ('Uiha)	Same	Year 1
1.1.5	Increase water catchment ('Otumu'omu'a)	Same	Year 1
1.1.6	Water catchment (Lulunga)	Same	Year 1
1.2	<u>Education Project</u>		
1.2.1	Education - improve resources (Pangai)	MEWAC to provide costs 2010	Year 1
1.3	<u>Road Projects</u>	Special project to determine feasibility and costs)- FY 2010/11	
1.3.1.	Pave agricultural roads (Pangai)	Same	Year 1 - 2
1.3.2	Paving of roads (Foa)	Same	Year 1 - 2
1.3.3	Paving of Ha'ano island roads (Ha'ano)	Same	Year 1 - 2
1.3.4	Road ('Uiha)	Same	Year 1 - 2
1.3.5	Nomuka Roads ('Otumu'omu'a)	Same	Year 1 - 2
1.4	<u>Wharf Projects</u>	Special project to determine feasibility and costs- FY 2010/11	
1.4.1	Improve wharf (Pangai)	Funding under World Bank aid.	2010 before end of Oct
1.4.2	Dredging of Ha'ano, Pukotala and Mo'unga'one wharves (Ha'ano)	FSC	Year 2 - 3
1.4.3	Nomuka Wharf (Nomuka)	Current AusAID	2010 -11
1.4.4	Beacon lights for the wharf (all islands as appropriate)	FSC	Year 2 -3
1.4.5	Improvement of Ha'afeva wharf and new Tungua jetty (Lulunga)	FSC	Year 3 -4
1.5	<u>Solar Power Projects</u>	Special project to determine feasibility	

Ref	Level of Need/Projects	Estimated Costs - TOP	Period to be Implemented
		lity and costs- FY 2010/11	
1.5.1	Solar powered electricity to alternate with current diesel power *** ('Uiha)	FSC	Year 1- 2
1.5.2	Solar power *** (Lulunga)	FSC	Year 1 -2
1.6	<u>Tourism</u>	Minis of Tourism with TTA to provide advice	
1.6.1	<u>Tourism ('Uiha)</u> Packaged tours Lifuka,'Uiha, Felemea, Uoleva, Lofanga	FSC	Year 1 -2
<b>2</b>	<b><i>Level 2 Needs (Risk Scores of 81)</i></b>		
2.1	<u>Foreshore protection</u>	Special project to determine feasibility and costs- FY 2010/11	
2.1.2	Foreshore protection (Pangai)	Reported AusAID FSC August 2010	Year 1 - 2
2.1.3	Foreshore protection (Lulunga)	FSC	Year 1 -2
2.2	<u>Health</u>	Special project to determine feasibility and costs- FY 2010/11	
2.2.1	Improve MOH resources such as increasing staff number, x-ray machine, mortuary (Pangai)	FSC	Year 1
2.2.2	Proper rubbish dump and sewage (Pangai)	FSC	Year 1
2.2.3	Toilet septic (upgrade ?) (MEWAC OIC Ha'apai High School)	FSC	Year 1
2.3	<u>Cruise-ship to visit Ha'apai</u>	Mainly shipping agent but costs to MOT and TDS in ensuring depths of sea, ship visits	
2.3.1	Cruise-ship enquiry (through Transam Shipping) last month to call in Pangai, Uoleva, 'Uiha, Limu, and Nomuka.	Private sector meet own costs.	Mid-2011
2.4	<u>Village protection from pigs</u>	Special project to determine feasibility and costs- FY 2010/11	
2.4.1	Village fence (Pangai)	FSC	Year 1 -2
2.4.2	Village fence (Foa)	FSC	Year 1 -2
2.4.3	Village fence (Ha'ano)	FSC	Year 1 -2
2.4.4	Village fence/pig fence ('Otumu'omu'a)	FSC	Year 1 -2
2.4.5	Village fence (Lulunga)	FSC	Year 1 -2
2.5	<u>Ferry serving Ha'apai only</u>	Special project to	



Ref	Level of Need/Projects	Estimated Costs - TOP	Period to be Implemented
		determine feasibility and costs- FY 2010/11	
2.5.1	Inter-island – ferry (Pangai)	\$5 – 6 million	Year 1 -2
2.5.2	District boat ('Uiha)	same boat	Year 1 -2
2.5.3	Inter-island – ferry ('Otumu'omu'a)	same boat	Year 1 -2
2.5.4	Boat (Lulunga)	same boat	Year 1 -2
2.5.5	Support a new intra inter-island ferry for Ha'apai (Police OIC)	same boat	Year 1 -2
2.5.6	Repair old boat or have a new one (MEWAC OIC)	same boat	Year 1 -2
2.5.7	No boat for field inspection (MAFFF OIC)	same boat	Year 1 -2
2.5.8	Boat for civil servant pay, especially Lulunga and 'Otumu'omu'a which now 2 monthly pay.(MOFNP OIC)	same boat	Year 1 -2
2.5.9	Intra-island ferry for month visits to islands, Old boat not working (MOH OIC)	same boat	Year 1 -2
2.5.10	Boat for inspection (MLCI OIC)	same boat	Year 1 -2
2.5.11	Boat for beacon maintenance (MOT OIC)	same boat	Year 1 -2
<b>3</b>	<b><i>Level 3 Needs (Risk scores of 72)</i></b>		
3.1	<u>Education</u>	Special project to determine feasibility and costs- FY 2010/11	
3.1.1	Education – increase number of teachers (Pangai)	FSC	Year 1
3.1.2	Education - vocational studies (Pangai)	FSC	Year 1
3.1.3	More primary school teachers (MEWAC OIC)	FSC	Year 1
3.1.4	More high school teachers (MEWAC OIC)	FSC	Year 1
3.1.5	Form 7 (MEWAC OIC)	FSC	Year 1
3.1.6	Vocational studies (MEWAC OIC)	FSC	Year 1
3.2	<u>Pig Fences</u>	Special project to determine feasibility and costs- FY 2010/11	
3.2.1	Pigs affect production (MAFFF OIC)	Same	Year 2
3.3	<u>Access to Market</u>	Special project to determine feasibility and costs- FY 2010/11	
3.3.1	Market for women's weaving (Foa)	FSC	Year 1 -2
3.3.2	Market for women's weaving (Ha'ano)	FSC	Year 1 -2
3.3.3	Market for weaving and fishing ('Uiha)	FSC	Year 1 -2
3.3.4	Market for women's weaving and fishing ('Otumu'omu'a)	FSC	Year 1 -2
3.4	<u>Health</u>	Special project to determine feasibility	

Ref	Level of Need/Projects	Estimated Costs - TOP	Period to be Implemented
		lity and costs- FY 2010/11	
3.4.1	Dentist ('Otumu'omu'a)	FSC	Year 1 -2
3.4.2	Improvement for health facility such as delivery room and dentist (Lulunga)	FSC	Year 1-2
3.4.3	Waste to be transported to Tonga (by Air NZ) (MOH OIC)	FSC	Year 1 -2
3.4.4	Medical equipment - X-ray machine. No 'Aisi mate. No oxygen plant (MOH OIC)	FSC	Year 1 -2
<b>4</b>	<b>Level 4 Needs (Risk Scores of 63)</b>		
4.1	Education		
4.1.1	More teachers to primary schools (Foa)	MEWAC funds	2010
4.1.2	More teachers for primary school/DVD ('Uiha)	MEWAC funds	2010
4.2	Health		
4.2.1	Office WC and septic tank is a health and environment hazard (located at seashore)	\$20,000 suggest local funds	2010
<b>5</b>	<b>Level 5 Needs (Risk Scores of 54)</b>		
5.1	Education		
5.1.1	Education - establish a form 7. (Pangai)	MEWAC funds	Year 2 -3
5.1.2	Form 7 (Foa)	MEWAC funds	Year 2 -3
5.1.3	More staff quarters (MEWAC OIC)	GoT	Year 2 -3
5.2	Finance		
5.2.1	Customs Department building for inspection of yachts (MOFNP OIC)	GoT	Year 1
5.3	Sports		
5.3.1	No sport equipment	MOTEYS funds	Year 1 -3
5.3.2	No gym for the Ha'apai Community	MOTEYS funds	Year 1 -3
5.4	Health		
5.4.1	Foreshore (MOH OIC)	See 2.1	
5.5	Staff		
5.5.1	Government flat (MLCI OIC)	GoT	Year 2
5.6	Transport		
5.6.1	Office Vehicle (MOT OIC)	GoT transfer 1 van from Nuk	Year 1
<b>6</b>	<b>Level 6 Needs (Risk Scores of 48)</b>		
6.1	Development Structure		
6.1.1	6 HDC members from Ha'apai (Pangai)	GoT	2010
6.2	Fisheries		
6.2.1	Ice block making (MAFFF OIC)	See 2.5	Proposed Hp ferry to carry
<b>7</b>	<b>Level 7 Needs (Risk score of 45)</b>		
7.1	Law and Order		

<b>Ref</b>	<b>Level of Need/Projects</b>	<b>Estimated Costs - TOP</b>	<b>Period to be Implemented</b>
7.1.1	Sub-station for Kauvai and Lulunga Districts as they cannot deal with complaints promptly	GoT	Year 1 - 2